

SELECT ENGLISH

CAMBRIDGE & LONDON



Select English
Certification No. 119
www.selectenglish.co.uk/119
Educational Oversight 2016

Accredited by the



for the teaching
of English



**25th Anniversary
1991-2016**



English Language Courses in Cambridge



Punting on the River Cam

Select English was established in Cambridge in 1991. We are committed to providing high quality, personalised teaching that helps all our students reach their learning goals. As a small, family-run school, we treat all our students as individuals and offer a friendly, stimulating, supportive and inclusive environment to help you at every stage of your learning.

Why choose Select English Cambridge?

Quality tuition

At Select English we pride ourselves in the quality of our language classes.

Small classes

Students are taught in small groups with no more than 12 per class.

International experience

Students come from all around the world to study at Select English, from as far away as Brazil or Indonesia, to a short hop across the channel from France.

Young learner courses

Courses for students of all ages from 7 to adults.

Beautiful locations

As well as using our school buildings in Cambridge we hold summer courses in some lovely boarding schools outside the city.

Engaging activity programmes

All courses offer a fun, diverse social programme. Visit Cambridge University colleges, try your hand at punting or join one of the excursions to get to know more of the UK.

Cambridge University courses

During July and August we offer the opportunity to live and study in one of the Cambridge University colleges.

Good accommodation

Stay in residential accommodation or join one of our carefully chosen and inspected homestays in Cambridge.

Individual care

Select English have a full time Accommodation Officer, a Student Services Manager and a 24 hour emergency telephone number.

Free airport transfers

On summer courses - see page 34 for conditions

Select English is a Highly Trusted Sponsor: No. 51G4BU6WX



Select English
Certification No. 119
educationaloversight.co.uk/219
Educational Oversight 2014





Select English, Station Road site

The School

Select English Cambridge is accredited by the British Council, and ISI, and we are proud to achieve this in tandem with being a family-run school. We enjoy a spacious campus comprising 4 beautiful buildings with well-kept gardens at the rear.

Classrooms

We have 16 well-equipped classrooms, some of which have interactive whiteboards. Our classrooms are bright and have all the necessary resources for a great learning experience.

Student Areas

Whether you are an indoor or outdoor type, the school has lots to offer. There is a student common room with magazines and comfy chairs for those that wish to relax, watch TV or have a snack while chatting to other students. We even have a quiet study area to promote learning after class.

Outside

We are lucky to have space for students to stretch their arms and legs before and after class with table tennis and a basketball hoop.

Internet

We have a comfortable self-access computer room with computers that are connected to the Internet and printers, and there is free wi-fi in all our buildings.

Residential Accommodation

Select English has 6 residence buildings, where students stay with our on-site house managers during our summer courses.

Hello and welcome to Select English, Cambridge

Select English is a family-run and caring school. I've been working here for 10 years, and as Director of Studies for the last 5, and love welcoming students from all over the world on both summer and year-round courses.

This year students from more than 50 different countries have studied with us, all with different learning goals. Whether you're studying to pass an exam, such as IELTS, need to improve your English for your career, or are simply looking to get better at expressing yourself, our team of dedicated teachers will be there to help you reach your goals.

What our students most like about our school is our teaching team, our busy social programme and the importance we give to students' progress. We conduct regular one-to-one tutorials because we care about making your time with us productive and enjoyable. Our small class sizes ensure that we can give you the attention you need.

Cambridge is a fantastic place to study and stay. It's student-friendly, safe, and, above all, beautiful.

I look forward to seeing you here soon,

K. O'Toole

Kate O'Toole
Director of Studies



“ *Select English meets its aims in providing a high quality, personalized education helping all students reach their learning goals.* ”

Select English ISI report 2012

Cambridge

Cambridge is globally recognised as a hub of international education and of English language learning, making it a great place for students to study.

Thanks to the great number of cultural and historical points of interest, in Cambridge you will never have a dull moment. You can take tours around the university buildings, enjoy time in a cafe, shop in the Grand Arcade or walk around the charming streets of the city. You could even try punting! There are also plenty of green areas where you can play sports or relax.

Cambridge is close to other major cities and sights. London is only a short 45 minute train journey away. Stansted airport is just 30 minutes from Cambridge and Heathrow can be reached in 1.5 hours.



Top 5 things to do in Cambridge

1. Visit King's College

King's, founded in 1441 by Henry VI, lies on the River Cam and has its own imposing Gothic chapel. It boasts many famous alumni from scientists like Alan Turing to novelists such as EM Forster.

2. Go punting

Loved by staff and students alike, a relaxing punt along the Cam under a blue, sunny sky is the perfect way to spend your afternoon after class.

3. Take Tea at Grantchester Orchards

Get a taste of the British countryside by walking to the village of Grantchester and taking tea and scones in the Orchard Tea Gardens, following in the footsteps of Rupert Brooke, Virginia Woolf, EM Forster and John Maynard Keynes.

4. Visit one of the many great museums

Cambridge has many famous museums, including the Fitzwilliam, which always provides an interesting excursion for Select students.

5. Quality shopping

Ted Baker, Apple, Fossil, John Lewis, Kurt Geiger, Levi's, L.K Bennet London – these are just some of the fashion and technology outlets that can be found in the centre of Cambridge, not to mention the ever popular Primark.



Milay Molina Zambrano
Venezuela

I came here in June and will be studying here for 9 months. I came to Cambridge because it's famous for working and studying.

My teacher, Gordon, is fun and he speaks beautifully.

Our Students

Students come from all around the world to study at Select English. Last year we had students from 58 different countries studying with us.

Our students are here for a variety of reasons, some studying for their IELTS exam, some want to improve their English for academic study and others are here for just a couple of weeks to brush up their language skills and get to know more about Cambridge and the UK.

“The high quality of teaching and individual support results in very good student attainment.”

(Select English ISI report 2013)



Greta Breddemann
Italy

I like Select English because it is really welcoming and the social staff and teachers are great. Heather took us out for dinner the other day which I really enjoyed.



Jung Hoon Shin
Republic of Korea

My classmates are very nice. Everyone is from a different country. There aren't too many people in the group, which gives me more opportunities to speak and practise.



Haruka Homma
Japan

The Director has helped me to find the right class so that I can improve what I need the most: my speaking and listening. This is difficult for people from Japan so it is important for me to improve these skills.



Our Teachers

Our teaching team is enthusiastic, fun, friendly and motivated.

Here is a little information about some of our teachers:

Ben

Ben has a degree in German and French and has taught English in Poland. For the last 7 years he's been working for Select English. Ben is CELTA qualified and is studying for his DELTA.

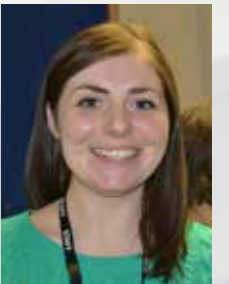
Ben enjoys the professional atmosphere in the Select English staff room and is always happy to share his experience with colleagues.



Nadine

Nadine has a degree in Italian, and is a DELTA qualified English teacher. She's been teaching at Select English for the last 3 years and also welcomes our students as a homestay host.

Nadine likes the friendly, caring atmosphere at Select English and enjoys the opportunity to meet students from all around the world.



Jo

Jo has been working as Senior Teacher at Select since October 2013 and has been teaching English to students of all ages for 8 years in the UK, Central and Eastern Europe and Japan.

She completed the DELTA course in 2010/11 and in addition to teaching she conducts workshops and teacher observations. She is looking forward to meeting you.



“A well-qualified and experienced staff provides an excellent education with some outstanding features.”

Select English ISI report 2012

Courses 16+

As a family-run school we take a personal approach to our classes. Our ethos is: your progress matters. That is why we have small class sizes on our courses and include one-to-one tutorials to ensure that your learning goals are met.

Course Types

We offer general English and intensive English courses as well as IELTS exam preparation.

Teachers

We have a dynamic and enthusiastic teaching team who all hold recognised teaching qualifications. They are specialised in teaching English as a foreign language, and have years of experience in helping students improve and prepare for exams.

Content

All levels have an ongoing twelve-week syllabus, and progress is monitored throughout the course – this is greatly helped by regular, one-to-one tutorials with teachers.

Levels

We offer courses from Elementary to Advanced levels. On the first day you will take a test to assess your current level of English. Teachers then monitor progress in class, through regular tests and in one-to-one tutorials to help you measure your progress.

Objectives

On our courses you will learn how English is used in real life. You will focus on the practical use of the four skills (reading, writing, listening and speaking) in every-day situations. In addition to text books, our teachers supplement classes with authentic resources such as newspapers, the internet and video clips.

We encourage everyone to actively participate in lessons and understand that students learn best by doing. Our classes have a relaxed and supportive atmosphere and we aim to make learning enjoyable and fun.

Study options

Hour 1	Hour 2	Hour 3	Hour 4	Hour 5
General English				
General English			IELTS	
General English			IELTS	IELTS
Intensive English				
Intensive English				IELTS

Maximum class size: 12

Average class size: 9

Start date: Any Monday

Levels: Elementary to Advanced

Hours per week: 5, 10, 15, 20 or 25

Tutorials: once a week with your teacher to reflect on progress and set goals for the next week

At Select English 1 hour = 60 minutes

IELTS

The IELTS exam opens doors for global opportunity and mobility. It is recognized worldwide, has a user-friendly format and takes place on a frequent basis. It is aimed at students of English who wish to study or work in institutions where English is the language of communication.

It is taken by approximately 1.4 million students annually, and our teachers are experts in preparing students for this exam. The exam focuses on the four key skills: speaking, listening, reading and writing. The course syllabus and Select teachers ensure that lessons contain elements that relate to the exam in order to help our students reach their goals.

If you are looking to obtain a qualification that states your level of English and is recognized by employers and institutes globally, what better way to prepare than to come to our internationally renowned teaching centre with experienced, qualified and caring staff?

Assessment

When learning a different language, one of the most important areas is knowing what to do next. Thanks to our assessment system teachers and students always know what the next step is for making progress.

What?

We conduct regular progress tests to give indications of what students need to improve. On your first day you will take a test to assess your current level of English. You will also take regular progress tests to help you measure how your English is improving.

How?

We will help you identify your long-term and short-term objectives and you will have the chance to discuss your progress in regular one-to-one tutorial sessions with your teachers.



Timetable - Monday to Friday

15-hour course: 9:00 - 12:30

20-hour course: 9:00 - 14:15

25-hour course: 9:00 - 15:30

Typical Day

09:00-10:30 Lesson 1 (90 mins)

Language lesson covering grammar and skills using your course book

10:30-11:00 Break

11:00-12:30 Lesson 2 (90 mins)

Language lesson covering grammar and skills using your course book

12:30-13:15 Lunch

13:15-14:15 Lesson 3 (60 mins)

IELTS or Skills based lesson covering speaking, listening, reading and writing

14:15-14:30 Break

14:30-15:30 Lesson 4 (60 mins)

IELTS



Group Courses

Select English design and run courses for groups of students throughout the year.

From school study trips for groups of teenagers to an English for the Military course provided for army officers, Select English has the experience to cater for your group's needs.

Courses can be arranged with homestay, residential or Cambridge University accommodation.

Example one-week group schedule

	0800	0900-1230	1230-1330	1330-1430	1430-1730	1800-
Sunday	Arrival at airport. Transfer to accommodation					
Monday	Breakfast at homestay	Lessons	Lunch	Lesson	Walking tour of Cambridge	Dinner at homestay
Tuesday					Visit King's College, Cambridge University	
Wednesday					Punting on the River Cam	
Thursday					Visit the Fitzwilliam Museum	
Friday					Visit the University Botanic Gardens	
Saturday	Full-day excursion to London. Walking tour & shopping					
Sunday	Departure. Transfer from accommodation to airport					





Activities

Year-round leisure programme

Throughout the year we offer a variety of leisure activities to our students (extra costs apply).

Basketball

Join our sports coach for weekly basketball sessions. We play regular matches against other schools in Cambridge.

Football

The school has a football team that competes in the Cambridge University League. All students are welcome to join the weekly training sessions and to try out for the team.

Excursions

Join one of the excursions offered each weekend to cities and places of interest around the UK. Visit London, Oxford, Stonehenge or one of the many other places of interest here.

Social activities

Each week a teacher organises a social activity. This could be a visit to one of Cambridge's museums, a trip to the famous tea house at Grantchester, punting on the River Cam or a visit to a local coffee shop for the chance to practise your English in an informal, friendly environment.



Accommodation

Select English arranges for students to stay in local homestay accommodation during their course. Staying in homestay accommodation can be an excellent way to get to know the local culture better as well as providing more opportunities to practise English.

All our homestay accommodation is carefully chosen by our Accommodation Officer, who pays regular visits to all those who host our students.

The Accommodation Officer is always available to talk to students and can deal with any problems that may occur in a quick and efficient manner.

Rooms

Homestay accommodation is provided in single rooms.

Meals

All homestay accommodation is half-board. Breakfast and dinner are provided by the hosts. All diets can be catered for. Please let us know if you have any allergies or special dietary requirements for religious or health reasons.

Laundry

Homestay hosts will do laundry for students once a week.

Internet

Many of our homestay hosts have internet. Please let us know well in advance if you are hoping to have a homestay with internet.

Some hosts may charge a small fee for use of internet

Private Home Accommodation

Select English also offers private home accommodation. These are homestays which host more than 4 students. Private homes provide meals and laundry service as detailed above, but may offer a reduced opportunity to interact with the hosts due to the number of guests.





Summer Courses

Courses for students aged 7 to adults in our centres in and around Cambridge and London

Beautiful locations

As well as using our school buildings in Cambridge we hold summer courses in some lovely boarding schools outside of the city.

Barnardiston Hall

Ages 7 to 13
Residential Course



Friends' Saffron Walden

Ages 12 to 16
Residential Course



London Juniors

Ages 13 to 17
Homestay Course



Quality tuition

At Select English we pride ourselves on the quality of our language classes.

Small classes

Students are taught in small groups with no more than 12 per class.

Engaging activity programmes

All courses offer a fun, diverse social programme. You can Visit Cambridge University colleges, try your hand at punting or join one of the excursions to get to know more of the UK.

Cambridge University courses

During July and August we offer the opportunity to live and study in one of the Cambridge University colleges.

Great accommodation

Stay in residential accommodation or join one of our carefully chosen and inspected homestays in Cambridge.

Free airport transfers

We offer free airport transfers on summer courses (see page 34 for conditions).

Cambridge Juniors

Ages 14* to 17
Homestay & Residential Course



Fitzwilliam College

Ages 16 to 25
Residential Course



English 'Plus'

Ages 14* to 17
Homestay & Residential Course



Cambridge Adults / IELTS

Ages 16+
Homestay



“ My son was very happy with his stay. The strength of Select English is that due to the diversity of nationalities, the students are compelled to practise their English. ”

Sophie Bossard (mother of Victor Bossard), FRANCE
Cambridge Juniors 2014



Teaching

- Maximum 12 in a class
- Elementary to advanced
- Reports and certificates

Young Learners

Barnardiston Hall (7-13)

- 15 full hours teaching per week
- We believe that children learn best by doing. Our classes aim to actively engage our pupils in using English with fun, enjoyable activities, project work and the use of technology. Lessons include songs, games, pair work and group work, as well as individual help from qualified language teachers. We encourage the children on our summer courses to feel positive and confident about learning English, so that they will return home motivated to continue with their language studies.

Teens

Friends' School (12-16)
London Juniors (13-17)
Cambridge Juniors (14*-17)
English 'Plus' (14*-17)

- 20 full hours teaching a week
 - 15 full hours teaching a week on London Juniors Course
- Our young learner courses are based on topics that are interesting, relevant and motivating to teenagers. Lessons include pair work, group discussions and project work. We encourage all students to actively participate in classes and we aim to build confidence in using English, whatever a student's level.

*Students aged 13 travelling with a group leader may be accepted in residential accommodation

Young Adults

Fitzwilliam College (16-25)

- 20 full hours teaching a week
- Our summer courses for adults focus on real language use. We use a wide variety of materials including newspapers, TV and radio programmes and the internet. Lessons include pair work and group discussions, pronunciation practice and help with grammar problems, as well as individual guidance from qualified English language teachers. We encourage students to use English as much as possible during your course, both inside and outside the classroom.

Accommodation & Welfare

- Full-board accommodation
- All diets catered for
- Qualified first-aider on all sites
- Supervised sport and activity programme
- 24-hour welfare support
- 24-hour emergency contact number for students and parents

Student welfare is a number one priority on all our summer courses. Classes are small (no more than 12 students per class) and all activities are supervised, with staff ratios of 1:15 on the Young Learner courses and 1:20 on the Teens and Young Adults courses.



Each course has first-aid trained staff on site. All students studying at Select English will have access to a medical centre. We can also help students to access other medical services they may need. These include dentists and orthodontists, optometrists, and counselling services (these may have extra charges).

- We carefully select and check our host families before they can host for Select English.
- Our hosts are regularly visited by the Accommodation Officer. We also monitor homestays through student



feedback.

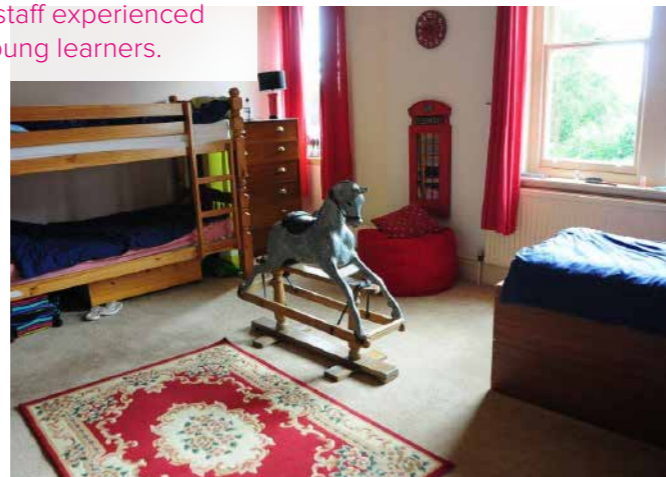
- All of our halls of residence have live in wardens who care for our students.
- All house managers are DBS checked and have first aid and fire training.
- All of the residences are within walking distance of the school.

Select English is committed to safeguarding and promoting the welfare of children. Please view our Safeguarding Policy and our Care of Under 18s Statement at www.selectenglish.co.uk





Barnardiston Hall is a boarding school noted for its warm, friendly atmosphere. Set in the heart of the Suffolk countryside, just 30 minutes' drive from Cambridge the school has plenty of staff experienced in looking after young learners.



“This place is awesome, I will never forget my teachers”

Georgii Komendatov, RUSSIA
Barnardiston Hall

Barnardiston Hall

Residential Course Ages 7-13

Key Info

Ages: 7 to 13
Class size: Maximum 12 students per class
Classes: 15 hours per week Elementary to Advanced
Accommodation: Residential in dormitories
Location: 30 minutes from Cambridge
Transfers: Free from Heathrow and Stansted (see page 34)
Course Dates: 03 - 16 July
 17 - 30 July

Accommodation

- Accommodation is in small dormitories on separate floors for boys and girls and supervised by school staff.
- Breakfast, lunch and evening meals are offered and taken in the School Dining Room. Special diets can be catered for.
- Regular laundry
- Bed linen is provided (students should bring their own towels).
- Safe, secure environment; about 4.5 km from the nearest town
- Warm, friendly atmosphere
- Plenty of staff experienced in looking after young learners
- Doctor on call

The programme

The course at Barnardiston Hall has an exciting and varied activity programme with sports, games and many visits and excursions.

- Full-day excursions on each 2 week course including London and Madame Tussauds
- Many local trips on the school coach
- Sports, games, arts and crafts
- All entrance fees included

Safe and secure campus

Great activity programme with full day excursions to London (with Madame Tussauds), Woburn Safari Park and Pleasurewood Hills each 2-week course.

Half-day trips to some great locations including Cambridge

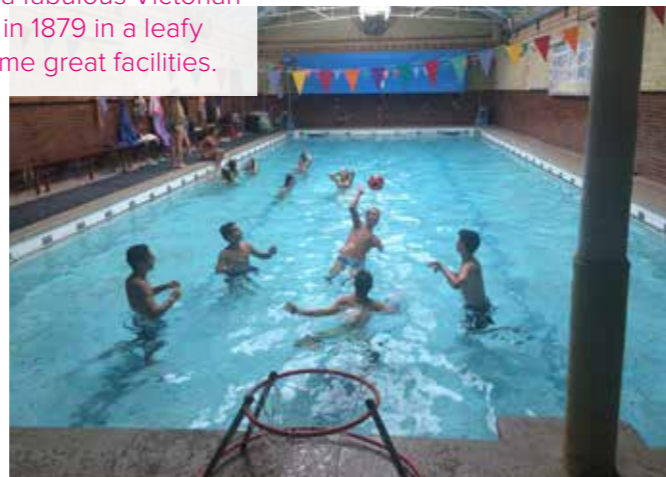
An example two-week activity schedule at Barnardiston Hall

	Afternoon activity	Evening Activity
Monday	Excursion to Bury St. Edmunds	Welcome Games
Tuesday	Visit to Duxford Air Museum	Quiz / Singing
Wednesday	Sports / Chill out	Film Night
Thursday	Mountfitchet Castle	Rollerworld Disco
Friday	Cambridge	Show Prep
Saturday	Full-day at Pleasurewood Hills	Free Time
Sunday	Full-day Excursion to London	Free Time
Monday	Visit Thetford Forest Park	Disco
Tuesday	Preparation for Show Night	Quiz / Singing
Wednesday	Full-day at Woburn Safari Park	Show Prep
Thursday	Visit Ickworth House and Park	Show Time!
Friday	Visit Saffron Walden	BBQ & Awards





Friends' School
Set in Saffron Walden, a small market town 30 minutes from Cambridge. The school is housed in a fabulous Victorian building, established in 1879 in a leafy green campus with some great facilities.



“It’s a great experience and a very good chance to make new friends and improve your English.”

Julia Enfedaque: Spain
Friends' Saffron Walden

Friends' Saffron Walden

Residential Course Ages 12-16

Key Info

Ages:	12-16
Class size:	Maximum 12 students per class
Classes:	20 hours per week Elementary to Advanced
Accommodation:	Residential in dormitories
Location:	30 minutes from Cambridge
Transfers:	Free from Heathrow and Stansted (see page 34)
Course Dates:	03 - 16 July 17 - 30 July 31 July - 13 August

Accommodation The programme

Friends' School is housed in a Victorian Building, built as a school in 1879. It is a traditional building offering many modern facilities.

- Boys and girls accommodated separately in dormitories
- Breakfast, lunch (or packed lunch) and evening meal provided
- Fully supervised by Select English staff, who will be staying on site
- Shared bathroom and shower facilities
- Bed linen provided (students should bring their own towels)

The course includes a full programme of excursions and activities on the campus (see the example below)

- Excellent sports facilities - tennis courts, all weather basketball and football pitch and an indoor sports hall
- Student common rooms
- Trips to London, Cambridge, Oxford and Bury St Edmunds
- Computers with internet access

Safe and secure campus

Great facilities on site, including indoor sports centre and swimming pool, tennis courts, common rooms, table tennis

Full-day excursions to London and Oxford and half-day trips to Cambridge and Bury St. Edmunds

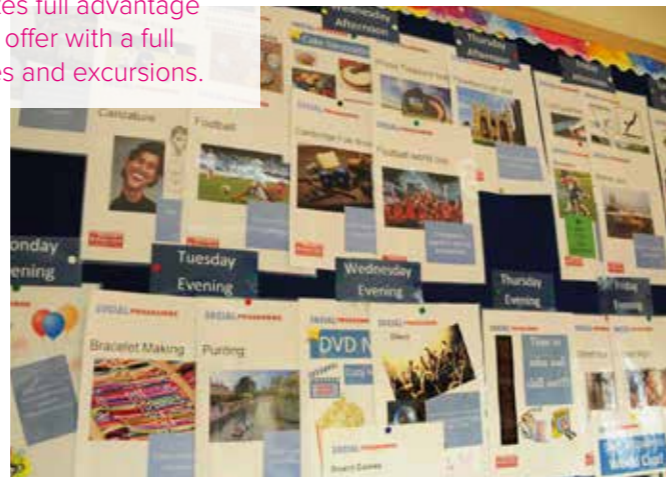
An example two-week activity schedule at Friends'

	Afternoon activity	Evening Activity
Monday	Tour of Saffron Walden	Welcome Party
Tuesday	Museum or Tennis	Football World Cup
Wednesday	Cambridge Trip	Film Night
Thursday	Swimming or Art Masks	Fashion Show
Friday	Scavenger Hunt or Swimming	Masquerade Disco
Saturday	Full-day excursion to London	Free time
Sunday	Full-day excursion to Oxford	Free Time
Monday	Mini Olympics	Swimming or Kick Cricket
Tuesday	T-shirt Making or Tennis	Cupcake Decorating or Football
Wednesday	Trip to Bury St. Edmunds	Film Night
Thursday	Rounders / Talent Show Rehearsal	Casino Night
Friday	Talent Show	Farewell Party





London Juniors is held at our permanent centre in Crystal Palace, a residential area in South London and takes full advantage of all London has to offer with a full programme of activities and excursions.



London Juniors

Homestay Course Ages 13-17

Accommodation The programme

In carefully chosen homestays in the Crystal Palace area.

- Twin rooms
- Breakfast and evening meals at homestay
- Hot lunches at schools (packed lunches at weekends)
- Laundry once a week
- Bed linen provided (students should bring their own towels)

This homestay programme is based in our permanent centre in Crystal Palace, a residential area in South London. The course will take full advantage of all that London has to offer with regular trips into the centre of the city, as well as a full day trip to another city such as Cambridge or Oxford.

Homestay course in a residential area of London

All homestays close to the school: average of 15 minutes on foot or by bus

Full sports, social and cultural activity programme with full-day and half day excursions

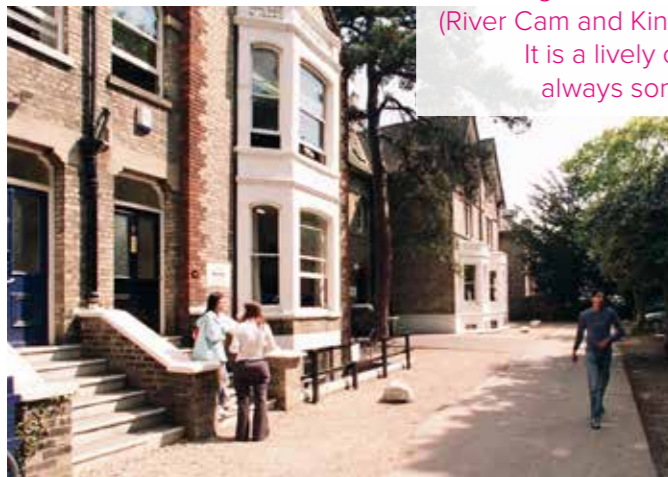
An example two-week activity schedule for London Juniors

	Afternoon activity	Evening Activity
Monday	Crystal Palace quiz	Welcome Party
Tuesday	Visit Big Ben, Buckingham Palace and Piccadilly Circus	Football
Wednesday	Sports afternoon	Volleyball
Thursday	Harry Potter London walking tour	Swimming
Friday	Visit to Hornimam Museum and Gardens	Film night
Saturday	Full-day Excursion to e.g. Cambridge, Oxford	Free Evening
Sunday	London Thames River Cruise	Free Evening
Monday	Sports afternoon	Free Evening
Tuesday	Visit National Gallery and Oxford Street	Sports
Wednesday	Ice-skating	Film night
Thursday	Camden Market and British Museum	Sports
Friday	Select's Got Talent	Farewell Party





Cambridge Juniors is held at our permanent site in Cambridge and takes full advantage of the cultural heritage of this beautiful university town (River Cam and King's college shown above). It is a lively course and there is always something going on.



“ Select has a very nice environment and general atmosphere. ”

Hoi Kwan Yu, HONG KONG
Cambridge Juniors

Cambridge Juniors

Residential & Homestay
Ages 14*-17

*Students aged 13 travelling with a group leader may be accepted in residential accommodation

Accommodation The programme

Homestay

- Twin rooms
- Breakfast, packed lunch and evening meal provided
- Laundry once a week

Private Home

Students aged over 16 may also be placed in private homes (see page 14)

Residential: Stay in one of our supervised residence buildings, near the school

- Single or shared rooms (two or three students per room shared room)
- Breakfast, packed lunch and evening meal provided
- Laundry once a week

Our programme takes full advantage of all that Cambridge has to offer.

The course includes a full sports and social programme, with activities every weekday afternoon and evening and a full day excursion each Saturday.

- Drama productions every two-weeks
- Computers with internet access
- The very popular International Student Disco
- A full-day excursion to London

An example two-week activity schedule for Cambridge Juniors

	Afternoon activity	Evening Activity
Monday	Walking Tour of Cambridge	Welcome Party
Tuesday	Select Olympics or Bowling (£)	Evening Punting
Wednesday	King's College Visit	Disco (£) or Garden Games
Thursday	Half-day Excursion to Bury St. Edmunds	Free Evening
Friday	Photo Treasure Hunt or Swimming (£)	Film Night or Sports
Saturday	Full-day excursion to London	Free Evening
Sunday	Sports afternoon or Shopping	Free Evening
Monday	Punting	Swimming or Kwik Cricket
Tuesday	T-shirt making or Tennis	Free Evening
Wednesday	Tea Party or Sports on the Park	Disco (£) or Garden Games
Thursday	Museum or Market Trip	Cupcake Decorating or Football
Friday	Select's Got Talent	Farewell Party



Key Info

Ages:	14*-17
Class size:	Maximum 12 students per class
Classes:	20 hours per week Elementary to Advanced
Accommodation:	Residential and Homestay
Location:	Cambridge
Transfers:	Free from Heathrow and Stansted (see page 34)
Course Dates:	26 June - 09 July 10 - 23 July 24 July - 06 August 07 - 20 August

Safe and secure campus

Live and study in the beautiful university City of Cambridge

Full sports, social and cultural activity programme with weekly excursions to London and half-day trips every 2 weeks.

NEW FOR 2016
'Select Academies'
Specialist Football or Tennis coaching

(optional: extra charge applies)



English plus Science



English plus Musical Theatre

English 'Plus' Courses

These are part of the Cambridge Juniors Course. English 'Plus' students share the same accommodation and follow the same activity programme as the Cambridge Juniors. Courses are held in our school buildings in Cambridge and in the Bodyworks Dance Studio.



“One of the best teachers I've ever had.”

Carlos Cañete Masse, SPAIN
English Plus Science

English 'Plus'

Residential & Homestay

Ages 14-17

*Students aged 13 travelling with a group leader may be accepted in residential accommodation

Accommodation The programme

Homestay

- Twin rooms
- Breakfast, packed lunch and evening meal provided
- Laundry once a week

Private Home

Students aged over 16 may also be placed in private homes (see page 14)

Residential: Stay in one of our supervised residence buildings, near to the school

- Single or twin rooms
- Breakfast, packed lunch and evening meal provided
- Laundry once a week

Each week you'll study 10 hours of English and 10 hours of your chosen subject: Science, Art or Musical Theatre. These subjects are taught by specialist teachers in our science labs, art rooms or at the Bodyworks Dance Studio.

The activity programme is the same as the programme for the Cambridge Juniors course.

An example two-week activity schedule for English 'Plus'

	Afternoon activity	Evening Activity
Monday	Walking Tour of Cambridge	Welcome Party
Tuesday	Select Olympics or Bowling (£)	Evening Punting
Wednesday	King's College Visit	Disco (£) or Garden Games
Thursday	Half-day excursion to Bury St. Edmunds	Free Evening
Friday	Photo Treasure Hunt or Swimming (£)	Film Night or Sports
Saturday	Full-day excursion to London	Free Evening
Sunday	Sports afternoon or Shopping	Free Evening
Monday	Punting	Swimming or Kwik Cricket
Tuesday	T-shirt making or Tennis	Free Evening
Wednesday	Tea Party or Sports on the Park	Disco (£) or Garden Games
Thursday	Museum or Market Trip	Cupcake Decorating or Football
Friday	Select's Got Talent	Farewell Party



Key Info

- Ages:** 14*-17
- Class size:** Maximum 12 students per class
- Classes:** 20 hours per week Elementary to Advanced
- Accommodation:** Residential and Homestay
- Location:** Cambridge
- Transfers:** Free from Heathrow and Stansted (see page 34)
- Course Dates:** 26 June - 09 July
10 - 23 July
24 July - 06 August
07 - 20 August

Safe and secure campus

Live and study in the beautiful university City of Cambridge

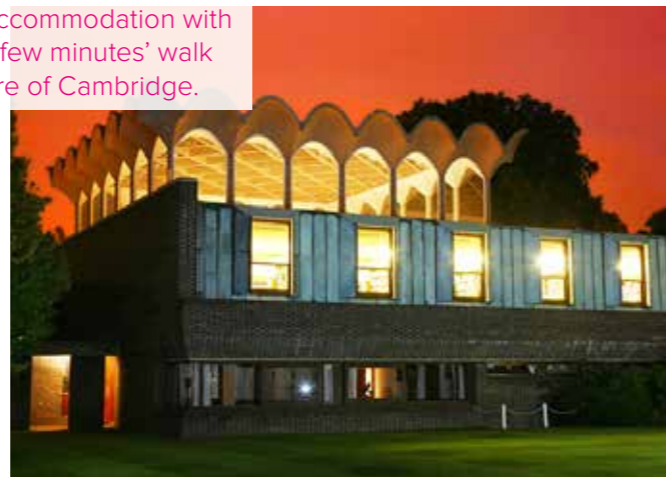
Full sports, social and cultural activity programme with weekly excursions to London and half-day trips every 2 weeks.

NEW FOR 2016
'Select Academies'
Specialist Football or Tennis coaching

(optional: extra charge applies)



Fitzwilliam College is one of the 32 colleges that make up Cambridge University. Fitzwilliam is one of the more modern colleges, combining excellent facilities and accommodation with a great location, just a few minutes' walk from the historic centre of Cambridge.



“The facilities are great and we have internet in all the bedrooms.”

Ariadna GImenez, SPAIN
Fitzwilliam College

Fitzwilliam College

Residential: Cambridge University
Ages 16-25

Key Info

- Ages:** 16-25
- Class size:** Maximum 12 students per class
- Classes:** 20 hours per week Elementary to Advanced
- Accommodation:** Residential single rooms semi en-suite
- Location:** Cambridge
- Transfers:** Free from Heathrow and Stansted (see page 34)
- Course Dates:** 26 June - 09 July
10 - 23 July
24 July - 06 August

Accommodation

This course offers a great opportunity to live and study in a Cambridge University college.

- Full board - breakfast, lunch and evening meals served in the impressive college dining room (shown below)
- Single rooms with en-suite shower & shared toilet
- Modern facilities
- Excellent location

The programme

Our programme takes full advantage of all that Cambridge has to offer. The course includes a full sports and social programme, with activities every weekday afternoon and evening and a full day excursion each Saturday.

- Full-day excursion to London
- Extensive sports fields and tennis courts
- Bike hire available

Great location near to the centre of Cambridge

Live in and learn about Cambridge University with visits to other colleges and lectures on admissions

Sports, social and cultural activity programme with weekly excursions to London

An example two-week activity schedule at Fitzwilliam College

	Afternoon activity	Evening Activity
Monday	Walking Tour of Cambridge	Welcome Pizza
Tuesday	Visit King's College, Cambridge University	Free time
Wednesday	Tennis / Football	Shakespeare play in Cambridge University Gardens (£)
Thursday	Punting	Free time
Friday	Visit Fitzwilliam Museum	Free time
Saturday	Full-day excursion to London	Free time
Sunday	Half-day excursion to Ely or Free time	Free time
Monday	Visit Jesus College, Cambridge University	Free time
Tuesday	Tennis / Football	Free time
Wednesday	Cambridge University admissions lecture	Free time
Thursday	Visit Grantchester	Free time
Friday	Free time	Farewell BBQ





Cambridge Adults is held in our permanent site on Regent Street in Cambridge. This is a flexible course where students can choose 15, 20 or 25 hours per week study, General English or IELTS. Accommodation, transfer and social programme options all available.



“There are lots of helpful teachers at the school who give you ideas for studying and things to do outside class.”

Farooq Abbasi, IRAN
Cambridge Adults

Cambridge Adults

Homestay Course Ages 16+

Accommodation The programme

Homestay

Homestays are all carefully chosen by our full-time Accommodation Officer, who regularly visits each host to check that all is OK.

- Single rooms
- Breakfast and evening meal provided
- Laundry once a week

Private Home

Students aged over 16 may also be placed in private homes (see page 14)

The adults course continues with the regular, year-round activity programme.

Each week we offer 2 or 3 activities in the afternoon or evening, such as punting, museums and pub nights.

Each weekend there are optional excursions to a variety of different locations in the UK.

These excursions are not included in the course fees.

In our school on Regent Street in the centre of Cambridge

Live and study in the beautiful university City of Cambridge

Flexible course: study 15, 20, 25 hours. General English or 20 hours of IELTS per week

An example two-week activity schedule for Cambridge Adults

	Afternoon activity	Evening Activity
Monday		
Tuesday	Punting (£)	
Wednesday		Pub Night (£)
Thursday	Coffee & Conversation	
Friday		
Saturday	Full-day Excursion (£)	
Sunday	Full-day Excursion (£)	
Monday		
Tuesday	King's College Visit	
Wednesday		Restaurant Meal (£)
Thursday	Coffee & Conversation	
Friday		



Useful Information

Airport Transfers

We offer a free airport transfer service for the following summer courses:	
Barnardiston Hall Friends' - Saffron Walden Cambridge Juniors English 'Plus' Cambridge Fitzwilliam College	Free transfer to/from Heathrow and Stansted airports on arrival days (Sundays) and departure days (Saturdays) for students on flights scheduled between 0900 and 1700
London Juniors	Free transfer to/from Heathrow and Gatwick airports on arrival days (Sundays) and departure days (Saturdays) for students on flights scheduled between 0900 and 1700
Cambridge based course departure transfers leave from 13 Station Road.	
Please pass on your flight details to us as soon as you have them to make sure you qualify for your free transfer.	
Please note that we do not arrange free transfers for courses in Cambridge between September and June. We can arrange taxi transfers - please contact us for prices.	

Summer activity programmes

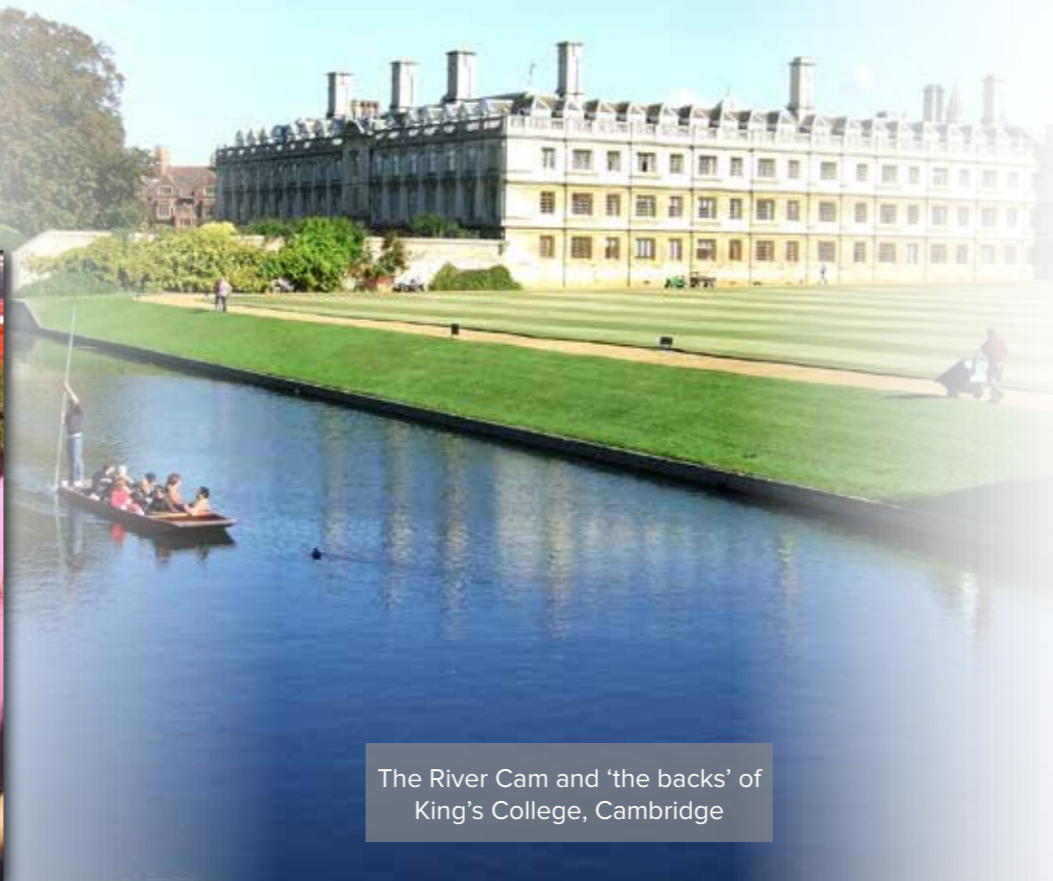
On our Cambridge-based summer courses we offer some optional activities that require the student to pay an entrance fee. Prices for these activities are subject to change, but we recommend that the following amounts would be enough to cover the cost of these activities:

Cambridge Juniors English 'Plus'	£15 per week (note that on these courses we always offer a free alternative to paid activities)
Fitzwilliam College	£20 per week
Cambridge Adults	£25 per week

Notes:
With photos by Matthew Wright

Front cover photos show Buckingham Palace, King's College Chapel and Select English Station Road Site (bottom right).
Rear cover photo shows the River Cam and 'the backs' of King's College, Cambridge

When you come through to the arrivals area, look for our member of staff who will be waiting for you holding a Select English sign. You will be taken from the airport to your summer course by coach or by taxi.



The River Cam and 'the backs' of King's College, Cambridge

Registering for a course

If you want to join one of our courses please complete the registration form or complete the on-line form at:
www.selectenglish.co.uk

Once you have completed the forms and paid the deposit we will reserve your place on the course, reserve your accommodation, send an official acceptance letter and send a course invoice.

Contact us

Select English, Cambridge
13 Station Road
Cambridge
CB1 2JB
Tel +44 (0)1223 364735
Fax +44 (0)1223 467150
E-mail: info@selectenglish.co.uk

Select English, London
144 Church Road
Crystal Palace
London
SE19 2NT
Tel +44 (0)208 653 7285
Fax +44 (0)208 653 9667
london@selectenglish.co.uk



Select English, Cambridge

13 Station Road

Cambridge, CB1 2JB

Tel +44 (0)1223 364735

Fax +44 (0)1223 467150

info@selectenglish.co.uk

www.selectenglish.co.uk

www.facebook.com/Selectenglish